



R MCX5] œ 2019-2020 œ a
b0 • œC^H Ū €

Å@6.....1

6 = b0 •6è 0 b û ë2

Â = >Cz D • œ — ,4

.....4

.....7

.....7

.....9

? = • œ 0Aô D oMÿ9

.....9

.....10

.....10

.....11

.....12

.....12

.....14

= | P / ±73 Ñ15

Ê = b0 • œC^H LÒ %o3116

.....16

.....17

£ = œ+U / ± F ~18

.....18

.....19

.....20

.....	22
9 = $\delta f / \pm$, ^o 75# oMÿ D(8" <23
.....	23
.....	23
.....	23
.....	24
i =L\$NÎ D /10E24
.....	24
.....	25
.....	25
.....	25
Lz , Æ ðFPQ 1 • œ W2019-2020 œ ^a b0 • œC^H Ū € e Ç ð>ž26

Å@6

650204.9 ,

1.6

2%-5%	5%-10%	A-	5%-10%	A
A-	A		B+	
10%-20%				
3			1	
59	A	28		
		A-	A	
20				
2019			50	
3	5		5	
9		2	11	
3		10		1
	3		13	
12			2	
			24	9

3

5

2009

11

20

80

1994

100

2022

70

2032

80

2052

100

6 = b0 •6è 0 b û ë

41

11

18

2

6

4

9

		13		
	6	2019		
		10	2020	27
2012	17		11	
	6		42	
	16			
10			73	
	18			
		16		20
			3	
			1	6
		A	75%	
		16260	9901	4827
	865			60.89%
2020		2292	705	
61				25
	4		4	
2020	31	2019	30	
				24

14 30 18 50
 60 151 24
 30 22
 50 20 70 211

Ā = >Cz D • œ — ,

ˆ 6 μ >CzLU C

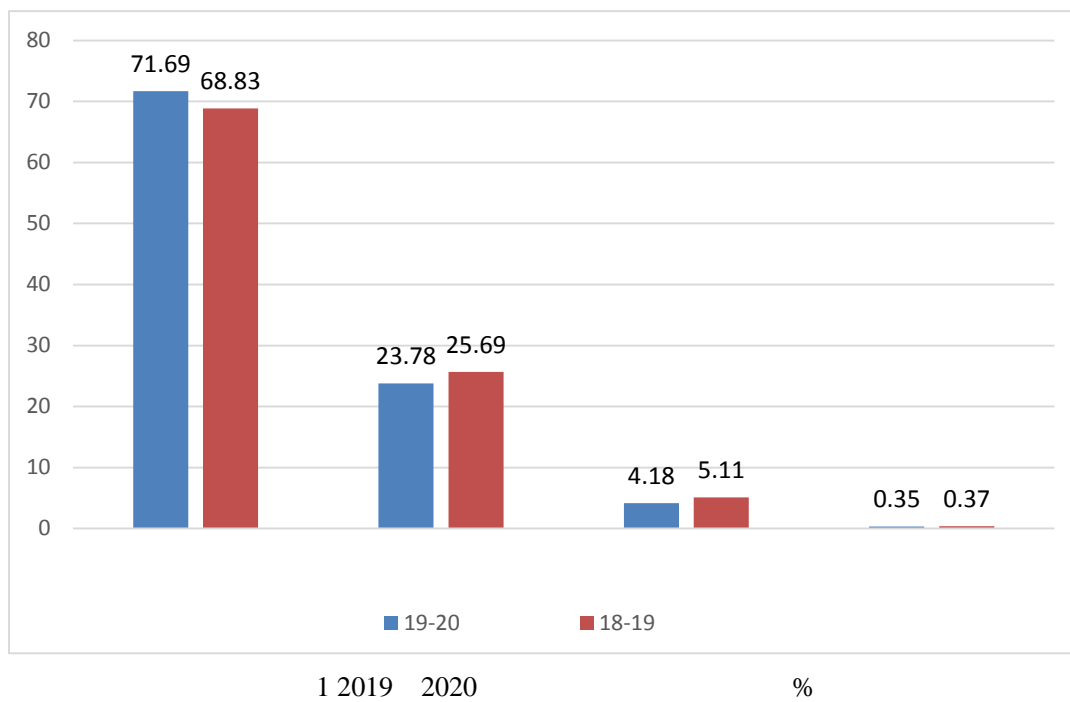
1. >Cz5 °

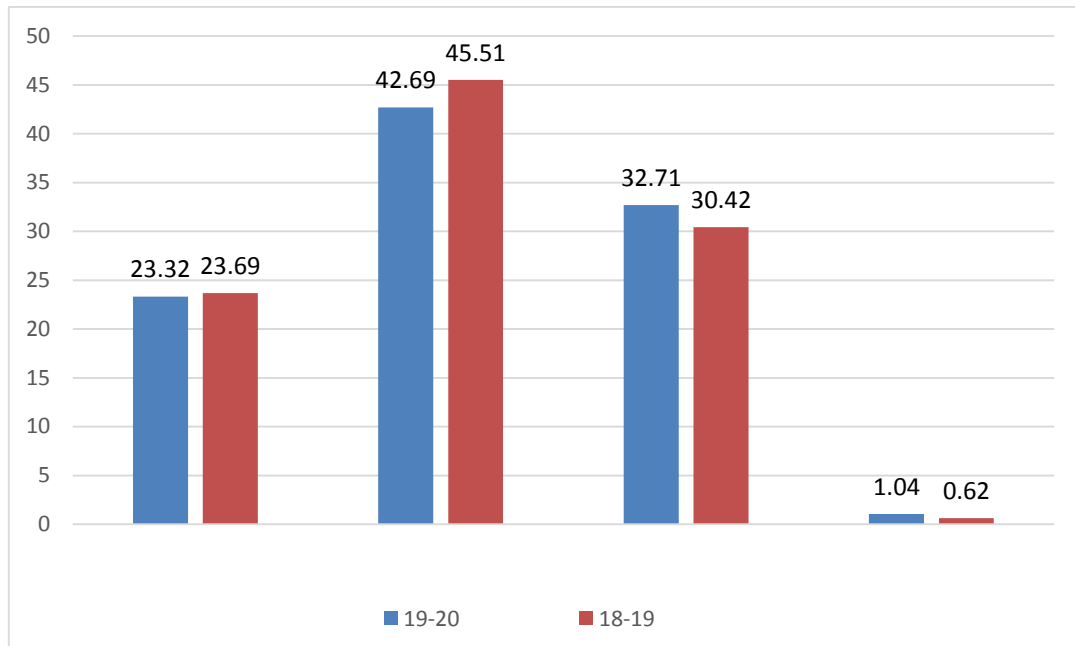
1562 862
 569 66.01%
 95.48% 71.69% 433
 50.23% 208 24.13% 45
 517 59.98% 119
 13.81% 569 66.01%
 933 432 46.3%
 227 24.33% 111 11.50%
 911 63.00%
 1793 53.51% 188
 215 87.44%
 16
 10 62.50% 99
 100.00%

1

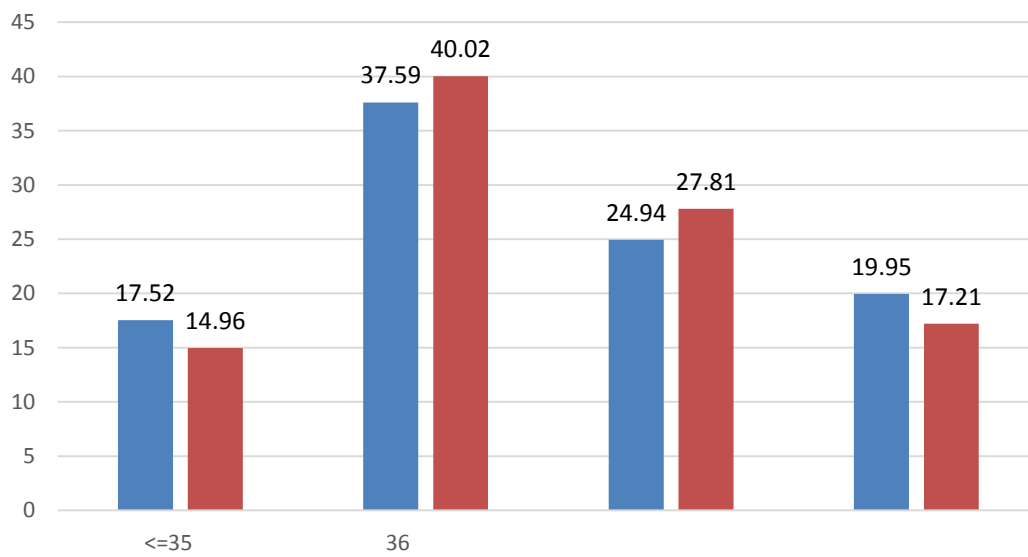
			%		%
		862	/	933	/
		201	23.32	229	24.54
		194	22.51	89	9.54
		368	42.69	199	21.33
		366	42.46	81	8.68
		282	32.71	255	27.33
		277	32.13	133	14.26

			%		%
		9	1.04	37	3.97
		9	1.04	11	1.18
		2	0.23	213	22.83
		618	71.69	227	24.33
		205	23.78	485	51.98
		36	4.18	208	22.29
		3	0.35	13	1.39
	35	151	17.52	150	16.08
	36-45	324	37.59	353	37.83
	46-55	215	24.94	272	29.15
	56	172	19.95	158	16.93





2 2019 2020 %



3 2019 2020 %

3 3 7 5 1 1 1 16 2 284 43 3 16 73 3 6 1

7

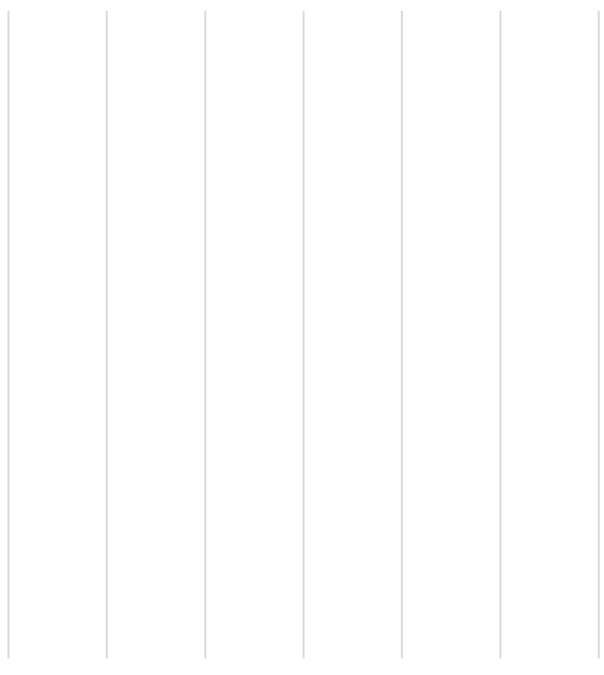
15

2. ΔΕΦ ΔΕΓ • ΔΕΛ

343	23.72%	497
14.83%		188
218		87.44%

ΔΕΛ

2019	12793.66	12921.58
341.08	344.49	25.48
25.73		



4 2019 2020

ΔΕΛ

65.67	18	5	65.02	51.39
31.61		18.18	21.36	21.57
	1.35	0.83		

0.83

0.51

5.05

3.11

2

	650205.19	39.99
	513920.52	31.61
	213567.76	13.13
	13527.2	0.83
	8296.0	0.51
	50537.04	3.11

271

19993

5

41

1.96456

0.67

1591.02

8.81%

1443

0.284

10

66

1461.12

2868.40

2

4

1

2020 9

25317.27m²

2874

189.94

28709

64.74

92.95

66.50

13833.0

2019

8.41

60988.31

17564.15

Elsevier SD WIND SSCI

SSCI

65

CALIS

CASHL

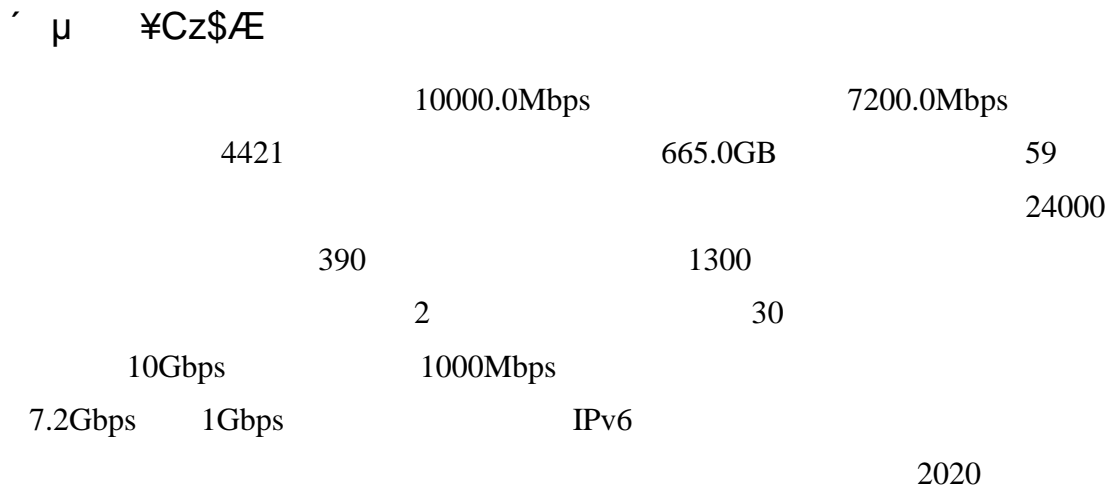
40

2019

19.83%

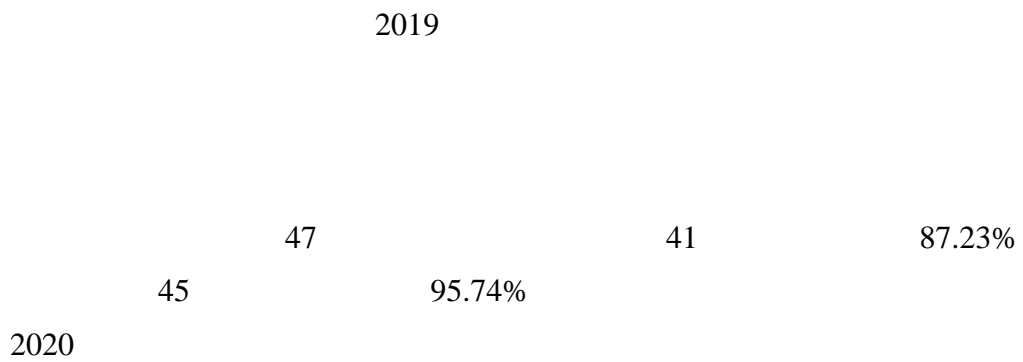
2880%

5108%



? = • œ 0Aô D oMÿ

´ 6 μ ð f / ± W E



3 2020

	%	%	%		%	%	%
	-	-	-		55.75	33.71	24.80
	65.31	30.56	19.66		-	-	-
	54.25	34.64	20.92		-	-	-
	-	-	-		-	-	-
	59.59	30.06	17.78		66.84	24.77	17.99
	-	-	-		-	-	-

Α μB40A 0Aδ

MOOC 23 SPOC 79
 12 1
 1446 3351
 2019 2020 4

4 2019 2020

		%	%	%
30		62.04	35.12	55.25
		56.27	66.32	58.19
31-60		17.52	61.57	31.69
		13.18	61.16	34.63
61-90		6.47	2.27	8.56
		5.13	10.95	9.06
90		13.97	1.03	4.50
		12.00	1.03	5.56

μ • † 0Aδ

2019 2020 30

5 2019 2020

1			
---	--	--	--

5			
6		21	
7			
8		3	
9			
10		2019	
11		5	
12			
13			
14			
15			
16			
17			
18		2	
19		2019	
20		3	
21		2019	
22			
23			
24		(3)	
25			
26			
27		--	
28			
29		2019	
30			

μ • œ oMÿ

6	34	29	12
	2019-2020		
	130	10%	2019-2020
	2018-2019	81	5%
	Ê µ Ô œ ĩ G		

£ µ ÔD+ • œ

1. ÔPÂ • œ

53	36	158	11	30.56%
	14	38.89%		

2. ÔPÂ • œ Ë ›

	2.0
	80
2020	9

3. P P Q æ Q P •6è ‹

2700

28

31

2020

310

103

34

1165

2020

)

20

2019

200

5

2019

3

2019 5

	2019-2020	2020	2020	2020	2020
50	124	9			25
			CFA	CPA Australia	AACSB
					135
		36	24		6
				75	
				1	7
					19
			19	2020	

= IP / ±73 Ñ

2019

1. $\hat{\mu} = \frac{1}{n} \sum_{i=1}^n x_i$ - $\hat{\sigma}^2 = \frac{1}{n} \sum_{i=1}^n x_i^2 - \left(\frac{1}{n} \sum_{i=1}^n x_i\right)^2$

1. $\hat{\mu} = \frac{1}{n} \sum_{i=1}^n x_i$ - $\hat{\sigma}^2 = \frac{1}{n} \sum_{i=1}^n x_i^2 - \left(\frac{1}{n} \sum_{i=1}^n x_i\right)^2$

	23	1	4.35%
22		95.65%	
	88	37	42.05%
79		89.77%	1
	11		
	71	53	9901
		187:1	2
	2.82%	26	36.62%
	64	90.14%	7
	9.86%		
		4	
4065.00:1			
	7	1	14.29%
	6	85.71%	16
	275	8	8
	135788		

2. $\hat{\mu} = \frac{1}{n} \sum_{i=1}^n x_i$ - $\hat{\sigma}^2 = \frac{1}{n} \sum_{i=1}^n x_i^2 - \left(\frac{1}{n} \sum_{i=1}^n x_i\right)^2$

275 30

3. $\hat{\mu} = \frac{1}{n} \sum_{i=1}^n x_i$ - $\hat{\sigma}^2 = \frac{1}{n} \sum_{i=1}^n x_i^2 - \left(\frac{1}{n} \sum_{i=1}^n x_i\right)^2$

93.50%

141969

1506 1393

92.82% 78.82% 90

99.26% 99.17%

76.57%

79.953

4. $_+^{\wedge} \neq L \cdot !\ddot{e} N L \cdot \text{œ}C^{\wedge}H - \acute{Y} \ddot{i} E$

$\pounds = \text{œ}+U / \pm F \sim$

$\acute{r} 6 \mu \text{œ} - \sim \ddot{O}$

2020 98.01%

74.42% 77.17%

18 288 4479

2020 490 263

227

101

19

10

120

18

30

2

3

2019 9

BIM

C

BIM

2020

5000
230

50

200

390

- -) () (

9 = ð f / ± ' , ° 75# oMÿ D(¯8" ‹

2017

´ 6 µ p LN→ xAôAx D?ú H , Ô ó b0 •6è52 > oMÿ

2018-2022

2019 12

´ Â µ pF S uB40A oMÿ , %ö B4 8 • œ#q Ñ

2019

2019

PPT

´ ? µ C > CB4 0Aô p É • , \ p S uB40A %o312ô ÷ L

2019

' μ4ú4ý • > /Aã , }B40A S u •6è • œ73 Ñ

i =L\$NÎ D /10E

' 6 μ ?ú W = @"j © ,F 6!› Ö p >CzLU C 0Aô

´ Â µ Ö p • œ%ö ç Â4Ü • p IAôAx , K 2 • > Ö] • œ Ë ›

´ ? µ Ö p 0 Ä ¥ ¶ e,° NC^ • œCz\$Æ 0Aô

´ µ Ö p 3L{ L 0Aô , Ö] / L Ú#w,° Ñ Ü

Lz , Æ ðFPQ 1 • œ W 2019-2020 œ^a b0 • œC^H Û € e Ç ; ð>ž

10173

1		60.89%
2		9901
3		0
4		0
5		1562
6		862
7		22.09
8		194
9		22.51%
10		618
11		71.69%
12	45	475
13	45	55.11%
14		50
15		5.80%
16		113
17		13.11%
18		41
19		37
20		1
21		0
22		0
23		¥0.67
24		¥,591.02
25		64.74
26		398329
27		929503
28		13.13

29			0.53
30			¥2,921.58
31			¥,766.27
32			¥44.49
33			¥5.73
34			153.09
35			28.96
			19.66%
			20.92%
			17.78%

36

38		1454
39		161
40		1267
41		1076
42		14
43		87.44%
44		23.31%
45		216
46		100.00%
47		99.90%
48		79.55%
49		86.43%
50		93.50%
51		97.26%